

Main Activities of the Project

A. Preparatory actions

- Creation of a web based database, which will include data derived from the determination of the exact boundaries, population distribution and density of the habitat type 9560* in the targeted areas.
- Preparation of Habitat Monitoring Plans for the monitoring and evaluation of the conservation status.
- Preparation of Habitat Management Plans focusing on the sound management of habitat type 9560*.
- Visitor impact assessment and preparation of maps illustrating the appropriate locations for proposed visitor management concrete actions (e.g. parking places, placement of rubbish bins, etc.) in the targeted areas.
- Submission of a plan for the sustainable control of the *Juniperus foetidissima* fruits predator.

B. Conservation actions

- On site habitat demarcation and fencing of selected parts, which will minimize the negative impact of over-grazing with the use of soft fencing materials (wooden posts etc).
- Removal of competitive vegetation in selected locations.
- Establishment of water tanks at Akamas for fire prevention.
- Small scale reforestation with *Juniperus* species in locations where habitats are degraded.
- Protection from the impacts of leisure activities through visitor management interventions and infrastructures, such as restriction barriers, notice boards and rubbish bins.
- Seed bank establishment at the Troodos Botanical Garden.
- Collection and storage of seed lots from the four *Juniperus* species at the seed bank.
- Establishment of saplings at the Botanical Gardens of Troodos and Akamas.

C. Public awareness and dissemination of results

- Provision of information with activities, which will include placement of notice boards within the boundaries and entry points of the sites, production of leaflets and newsletters, media coverage, participatory rural appraisals and an info-day by the end of the project.
- Website development.
- Presentations in international conferences.
- Production of a Layman's report and guidelines for protection and restoration of the habitat type 9560*.
- Production of a documentary on the targeted habitat.
- Production of education material for environmental education educators.
- One day environmental workshop.
- Student visits to the Troodos Botanical Garden.

D. Overall project operation and monitoring

- Establishment of Project Management Team, Scientific Committee and Stakeholder Committee.
- Networking with other LIFE projects.

Partners





Improving the conservation status of the priority habitat type 9560* in Cyprus

LIFE10 NAT/CY/000717

January 2013

Improving the conservation status of the priority habitat type 9560* in Cyprus

The project entitled “**Improving the conservation status of the priority habitat type 9560* in Cyprus**” aims at improving the conservation status of the priority habitat type of **endemic forests with *Juniperus* species** (known as **Aoratos or Arkefthos**).

The project started on the 1st of January 2012 and is expected to be completed by June 2015. The Project is co-funded (75%) by the European Community within the framework of LIFE+ program.



Objectives of the Project

The project aims to:

- a) Accumulate scientific knowledge that is essential for the protection, restoration, monitoring and evaluation of the endemic forests with *Juniperus* spp. in Cyprus.
- b) Identify, understand, quantify and halt anthropogenic threats that lead to the long-term degradation of the habitat.
- c) Design and implement actions for the protection and long-term restoration of the habitat.
- d) Provide support for better environmental management of Natura 2000 sites, through the collaboration of the scientific community, the competent authorities and the local communities.

Habitat 9560* - Endemic forests with *Juniperus* spp.

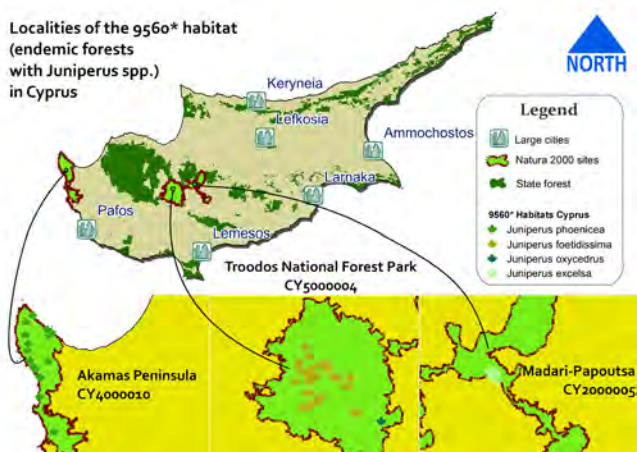
Juniperus species are shrubs or trees of the *Cupressaceae* family. In Cyprus there are four *Juniperus* species:

- *Juniperus oxycedrus*,
- *Juniperus phoenicea*,
- *Juniperus foetidissima*,
- *Juniperus excelsa*.

The tree strands of these species constitute the Annex I priority habitat type of the Habitat Directive 92/43/EEC: **9560* - Endemic forests with *Juniperus* spp.**

Project Areas

Juniperus stands are located within three sites of the Natura 2000 network (at the non occupied area of Cyprus):



- Ethniko Dasiko Parko Troodous
- Madari - Papoutsia
- Chersonisos Akama

Juniperus foetidissima and *Juniperus oxycedrus* tree stands are located within Ethniko Dasiko Parko Troodous. *Juniperus excelsa* stands are located within Madari - Papoutsia, while *Juniperus phoenicea* within Chersonisos Akama.

Juniperus phoenicea tree stands

Tall, dense forest formations of *Juniperus phoenicea* (habitat type 9560*) are found mainly in the occupied part of Cyprus, at 0–500 m, in marls and conglomerates. The most extensive communities of the species are located at Apostolos Andreas at Karpasia peninsula. At the southern part of Cyprus, tree stands of *Juniperus phoenicea* have been roughly mapped in scattered locations inside Chersonisos Akama.

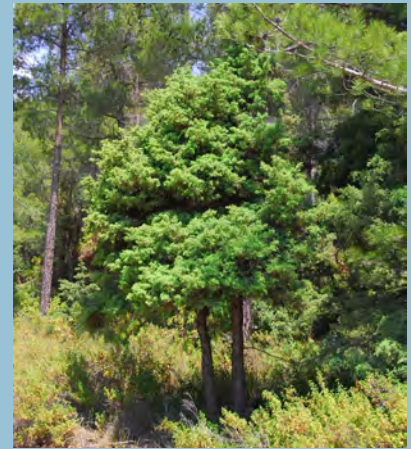
Forest (habitat type 9560*) and matorral formations (habitat type “5210 - Arborescent matorrals with *Juniperus* spp.”) coexist in many parts of Akamas peninsula.



Juniperus oxycedrus tree stands

Juniperus oxycedrus is found at altitudes ranging from 700 to 1500 m. It occurs mainly as a shrub on rocky hillsides. It is commonly found in Tripylos, Prodromos, Kyperounta and Madari.

Forest formations of *Juniperus oxycedrus* are exclusively found in the understory of *Pinus brutia* pine forests, in an area of 6418 m², at Mesa Potamos area.



Juniperus foetidissima tree stands

In Cyprus, *Juniperus foetidissima* is restricted within Ethniko Dasiko Parko Troodos. It occurs at areas with altitude higher than 1200 m, mainly in the understory of mixed pine stands (*Pinus brutia* and *Pinus nigra* forests). Forest formation of *Juniperus foetidissima* (habitat type 9560*) is restricted to the highest altitudes of Troodos massif, from 1500 m up to the highest peak. *Juniperus foetidissima* occurs there either as isolated individuals, or in the understory of *Pinus nigra*, forming scattered, sparse forests in rocky and steep slopes.



Juniperus excelsa tree stands

Juniperus excelsa is located at Madari and Papoutsas, at an altitude of 1200 - 1650 m, in shrub and tree formations.

It is the only *Juniperus* species that has been included in the "Red Book of the Flora of Cyprus", classified as "Near Threatened".

A large area of habitat type 9560* with *Juniperus excelsa*, occurs in private land (outside of the state forest).

